

VENT VENTILATION & DRAINAGE BATTEN 20mm

VB20 ROOF

DESCRIPTION

The VENT VB20 is a Polypropylene Ventilation & Drainage Batten 20mm designed to facilitate passive airflow in the roof void, reducing the risk of moisture build up and condensation.

FEATURES

- Convenient peel-off adhesive backing eliminates the need for nails or glue.
- Insect proof - 4mm vents prevent ingress of nesting insects.
- Provides passive airflow of 16,000mm² per linear metre.
- Easy to install - manufactured in 1800mm lengths for easy handling.
- Strong and durable - when used as a vented batten on top of roofing battens, the VENT VB20 has been upgraded in strength and tested to exceed foot traffic weight requirements on the roof above.
- Also suitable for use in the wall cavity.

SCOPE OF USE

- Recommended for skillion roofs.
- Commercial and residential application.
- To be used as part of proprietary ventilation system.

APPRAISALS

- BRANZ appraisal No. 979 [2017].

WARRANTY

- 30 years.

MAINTENANCE

- No maintenance requirements.

INSTALLATION

1. Peel-off adhesive backing for temporary fixing.
2. Can be cut with a knife, cutting tool or hand saw.
3. Cladding fixings must be fixed through the VENT VB20 into the purlins. NB: The VB20 should be treated as non-structural timber cavity batten.
4. Roof cladding fixings must conform to manufacturer's specifications.

Fig A: Application on Purlins

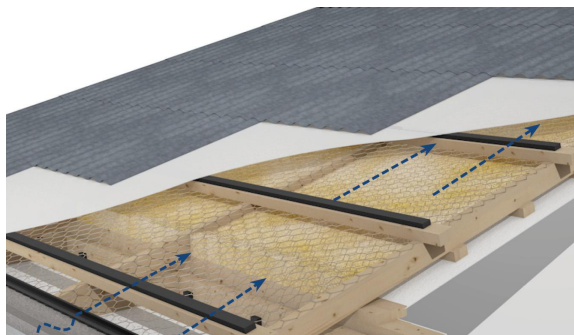


Fig B: Application on Skillion Roof



Fig C: Application on Purlins – Barge Detail

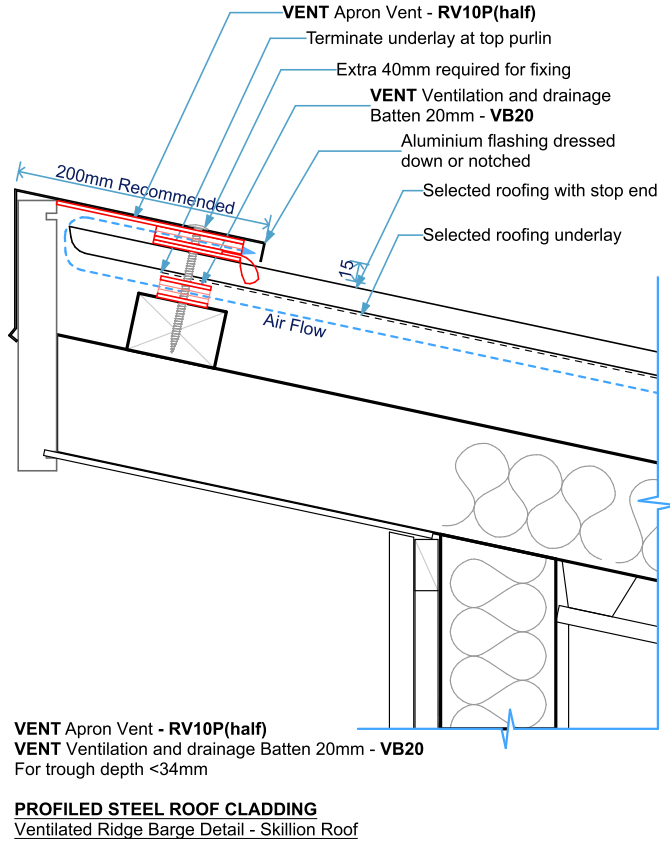


Fig D: Application on Purlins – Ridge Vent Detail

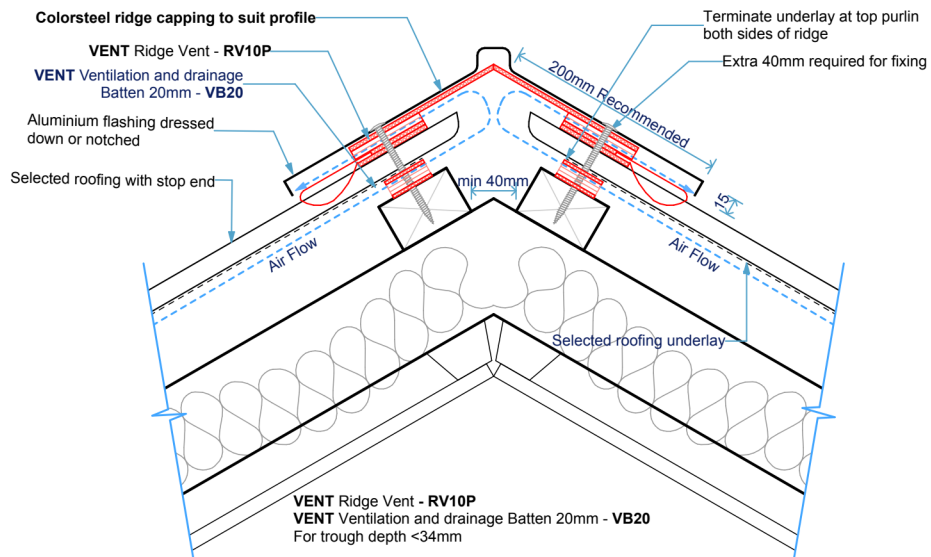


Fig E: Application on Purlins – Ridge Vent Detail

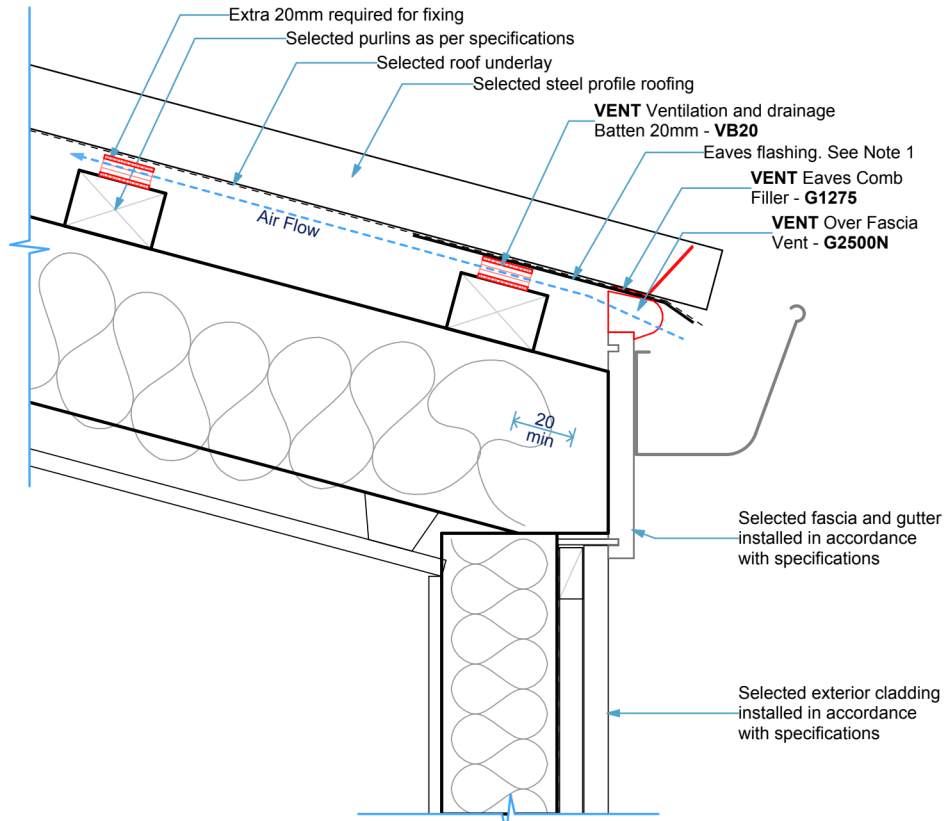
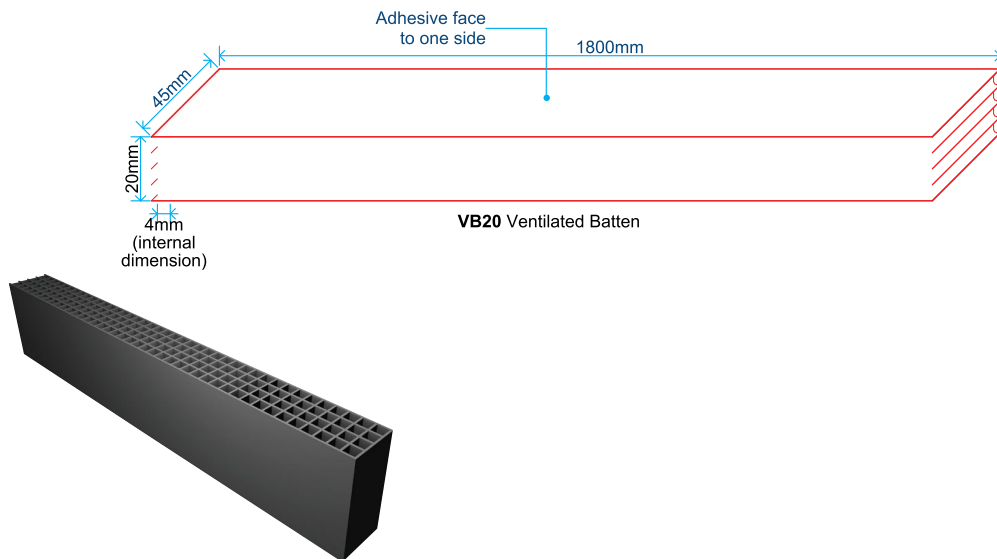


Fig F: Dimensions



Note: Diagrams are for guidance purposes only. The overall design is the responsibility of the designer as there are often other factors to consider. The company maintains a policy of continuous development of its product range and reserves the right to amend the specification without notice.



Distributed by TCL Hunt
7 Fisher Crescent, Mt. Wellington, Auckland, New Zealand

